

EMORPHIA CONFIDENTIAL

FIPA-OS

EMORPHIA CONFIDENTIAL

FIPA-OS

- What is FIPA-OS
- Who is FIPA-OS
- Who is using FIPA-OS
- FIPA-OS Tools
- FIPA-OS Features
- Extras

What is FIPA-OS

- FIPA-OS is a component-based toolkit enabling rapid development of FIPA compliant agents. FIPA-OS supports the majority of the FIPA Experimental specifications and is being continuously improved as a managed Open Source project, making it an ideal choice for any FIPA compliant agent development activity.
- Developed using sound software engineering principals enabling developers to develop agent solutions based on these principals.
- FIPA compliant platform but not constrained by FIPA
- FIPA-OS is **Open Source**. It is **Royalty Free** for commercial use. Emorphia is committed to keep it Open Source and Royalty Free.
- ~3,000 downloads of current release
- > 40,000

Who is FIPA-OS

- Open source community managed by
emorphia
- emorphia was founded by members of the Agents Group at Nortel Networks for the purpose of commercialising agent technology, network services, mobile technology and building solutions.
- Many contributions to the project have been received and can be accessed from
<http://fipa-os.sourceforge.net/contributions.htm>

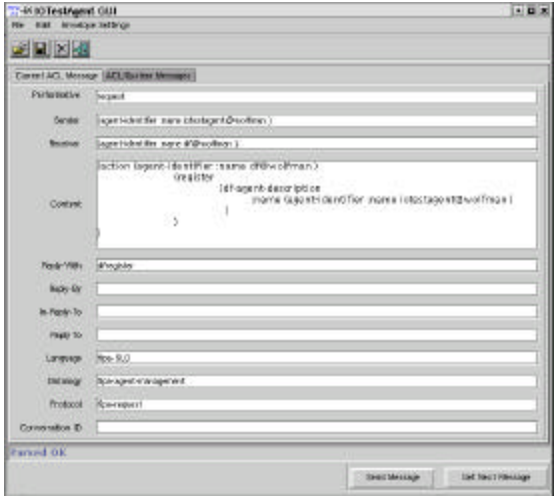
Who is using FIPA-OS

- European projects
 - CRUMPET
 - SHUFFLE
 - PATTERNS
 - NGNi - SMONET
 - ONTOWEB
 - Agent Link II
 - Liaison role between ONTOWEB and AgentLink II (WP Leaders)
 - AgentCities
- Universities
 - UHe
 - NTU
 - QM-UL
 - Czech Technical University
 - Etc.....
- Commercial
 - MITRE
 - Jefferson labs
 - ???

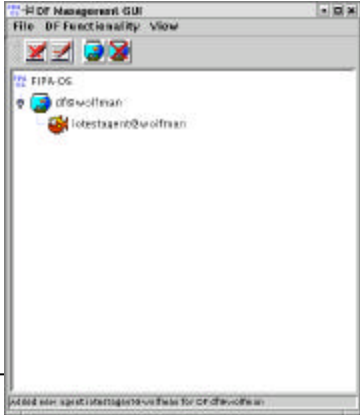
FIPA-OS Tools

EMORPHIA CONFIDENTIAL

EMORPHIA CONFIDENTIAL



IOTestAgent

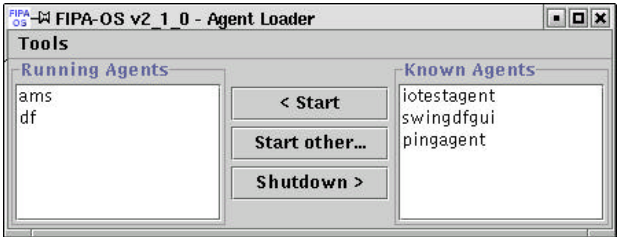


DFGUI

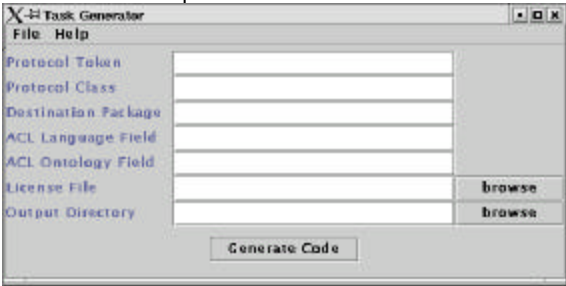


FIPA-OS

Agent Loader



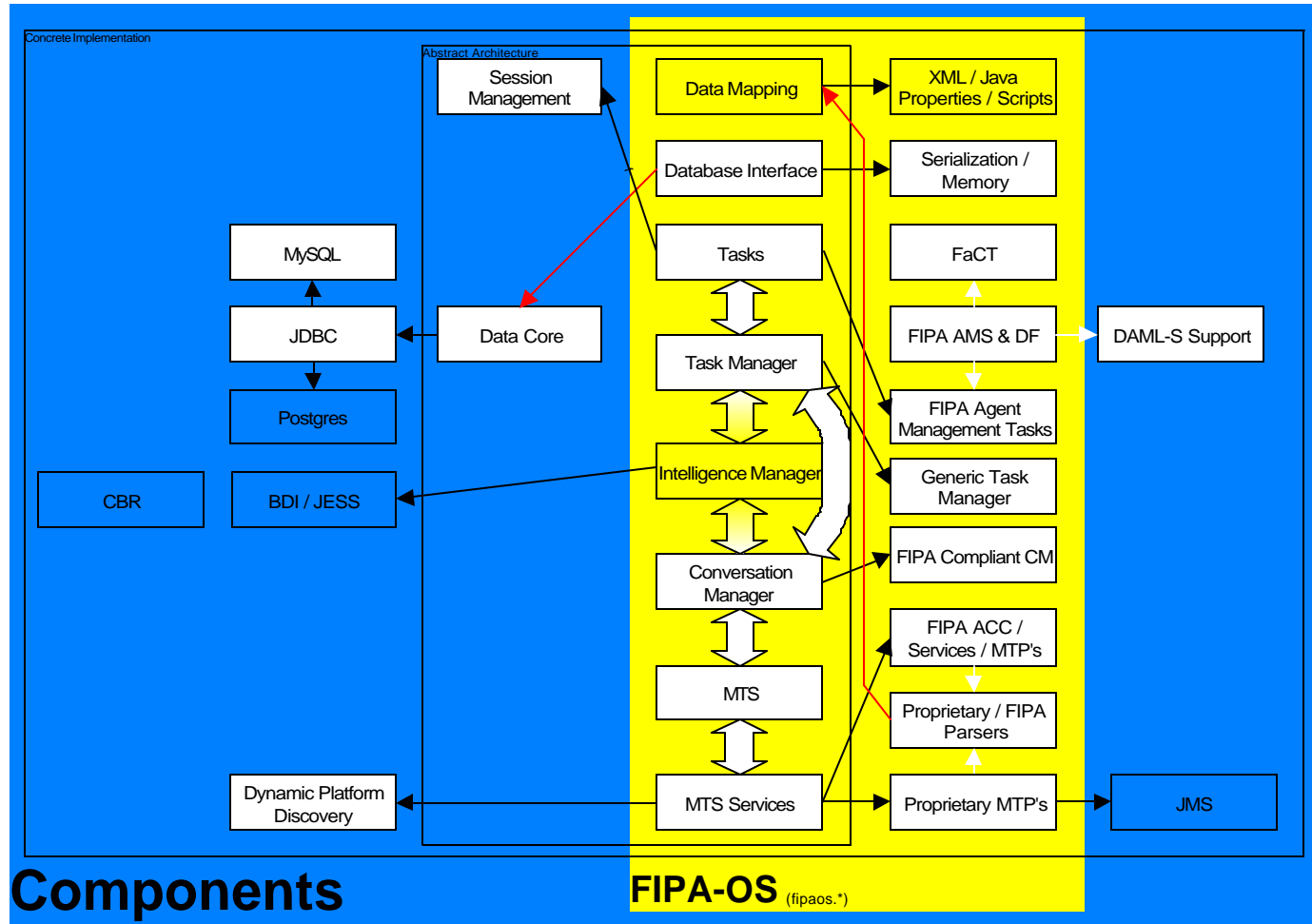
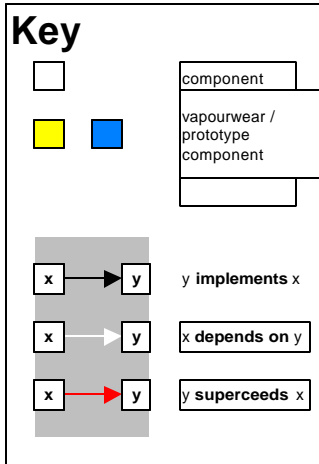
Task Generator



High Level Architecture of FIPA-OS Agent Shell

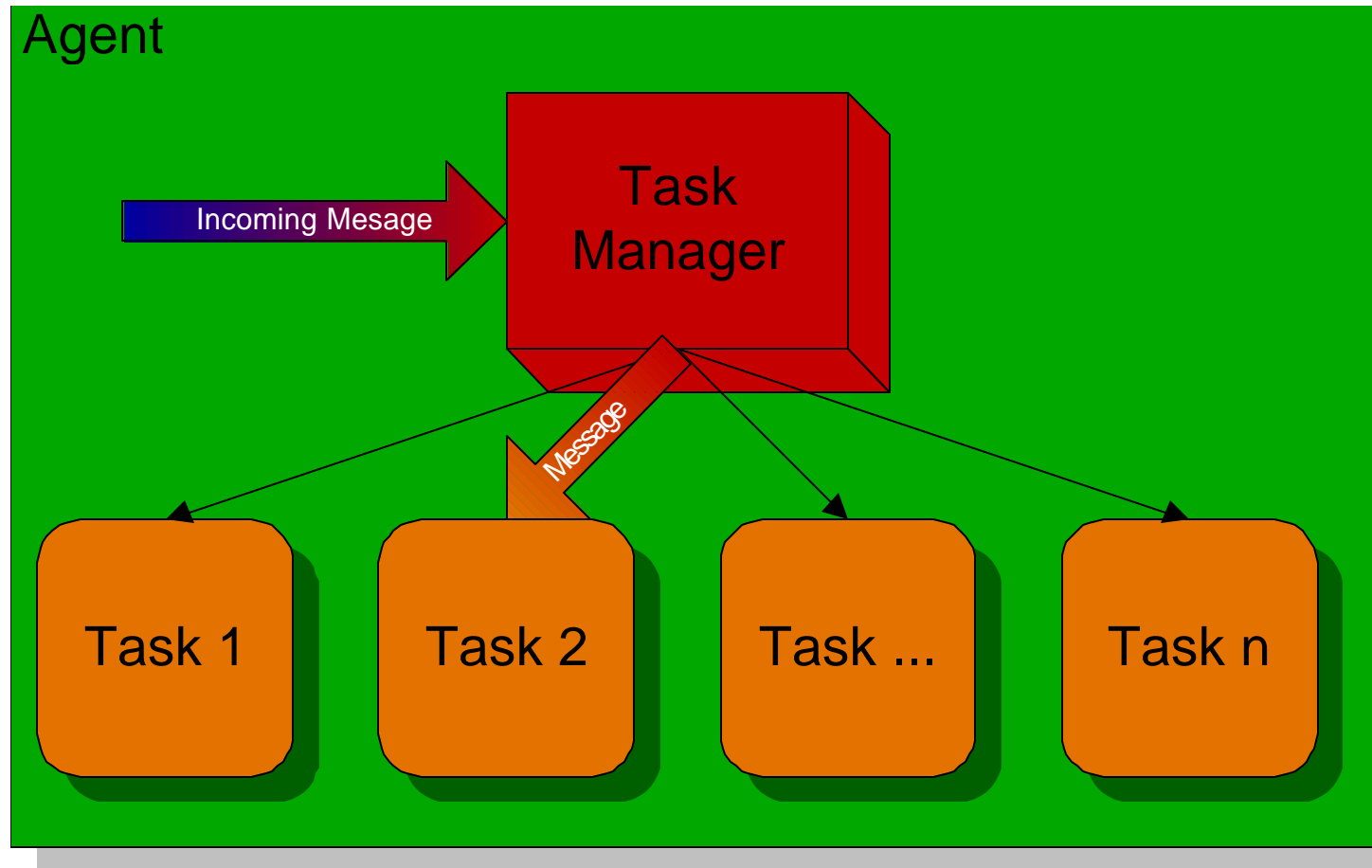
EMORPHIA CONFIDENTIAL

EMORPHIA CONFIDENTIAL



Task Manager

- Separates agent 'tasks' into distinct objects
- Messages are automatically routed to the correct state



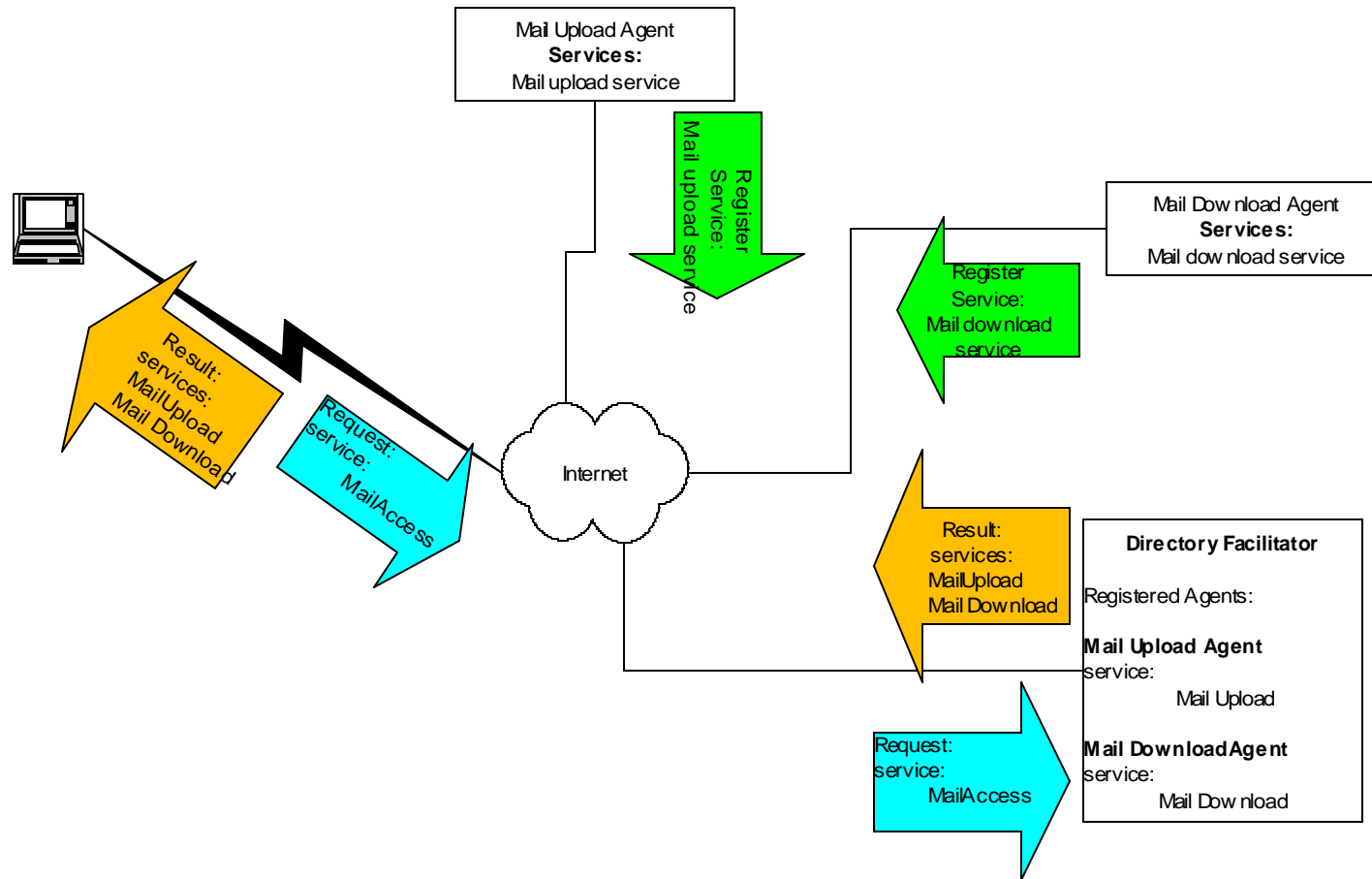
Additional Agent Functionality

- Ontology (A classification of what exists, and how it exists, in a domain)
 - Domain Modelling (Description of a domain so it can be reasoned over)
 - Tool Independent (Architectural design will remain so)
 - OIL, DAML, DAML+OIL, DAML-S (Committed to supporting these languages)
 - Domain Querying (Interrogating the domain model to classify entities)
 - FaCT (Relational inference over D-Logic encoding)
 - DAML+OIL
 - JENA (Inference over explicitly defined subsumption of ? properties)
 - DAML-S
- Reasoning
 - Belief-Desire-Intention
 - Case Based Reasoning

Knowledge Bases

- FIPA-OS Knowledge Base integration
 - Part of the Agent Shell
 - Allows adaptive behaviour
 - Model modification
 - Model querying

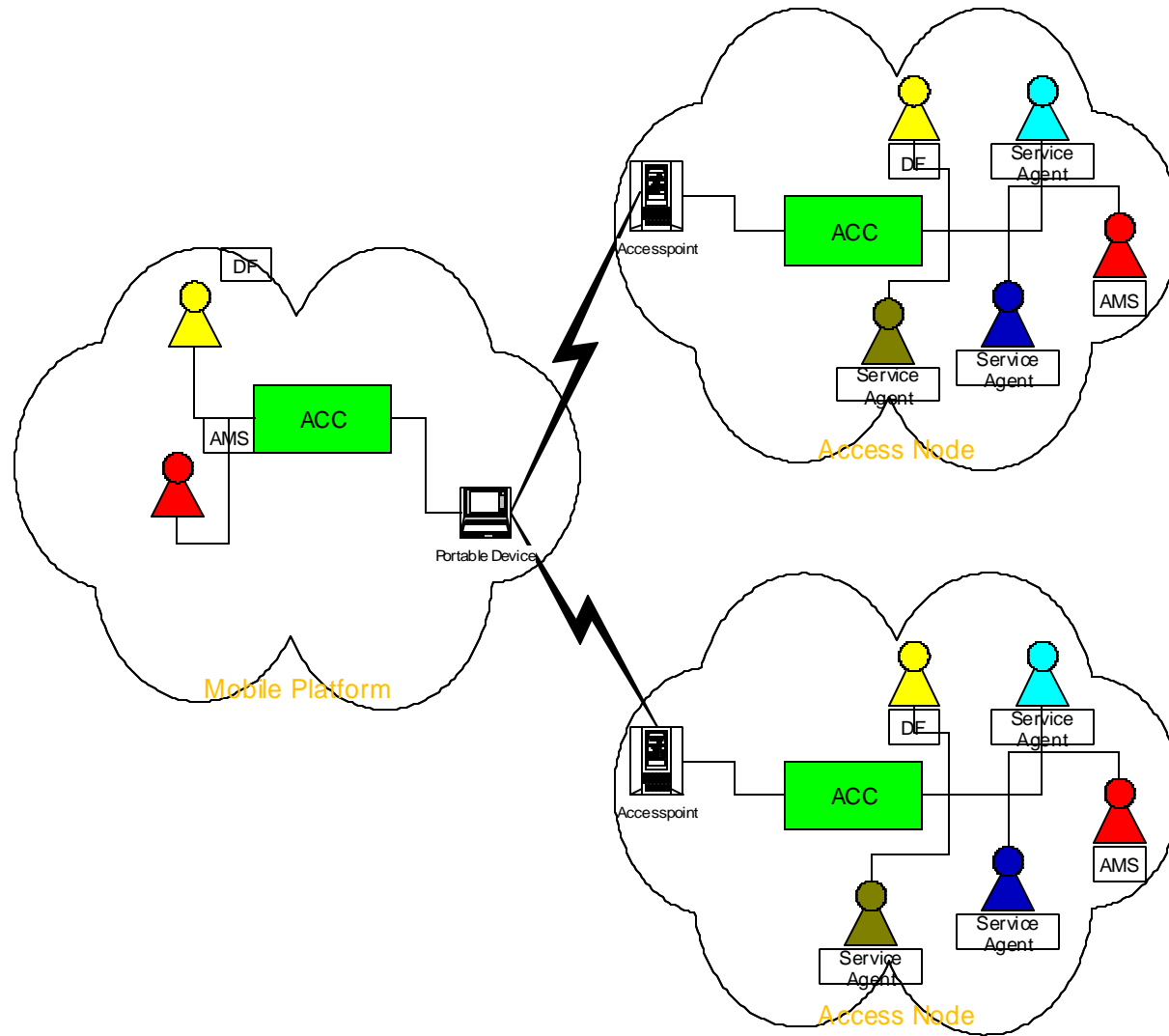
Service Composition



EMORPHIA CONFIDENTIAL

EMORPHIA CONFIDENTIAL

Platform Discovery



Extras cont..

- Ad-hoc platform discovery
 - Uses features of IP
 - Useful for wireless roaming
 - ACC detects remote ACC
 - ACC requests remote platform MTP profile
 - Local ACC forwards platform name to local DF
 - DF registers remote DF
 - When wireless link is lost
 - ACC informs DF
 - DF deregisters remote DF